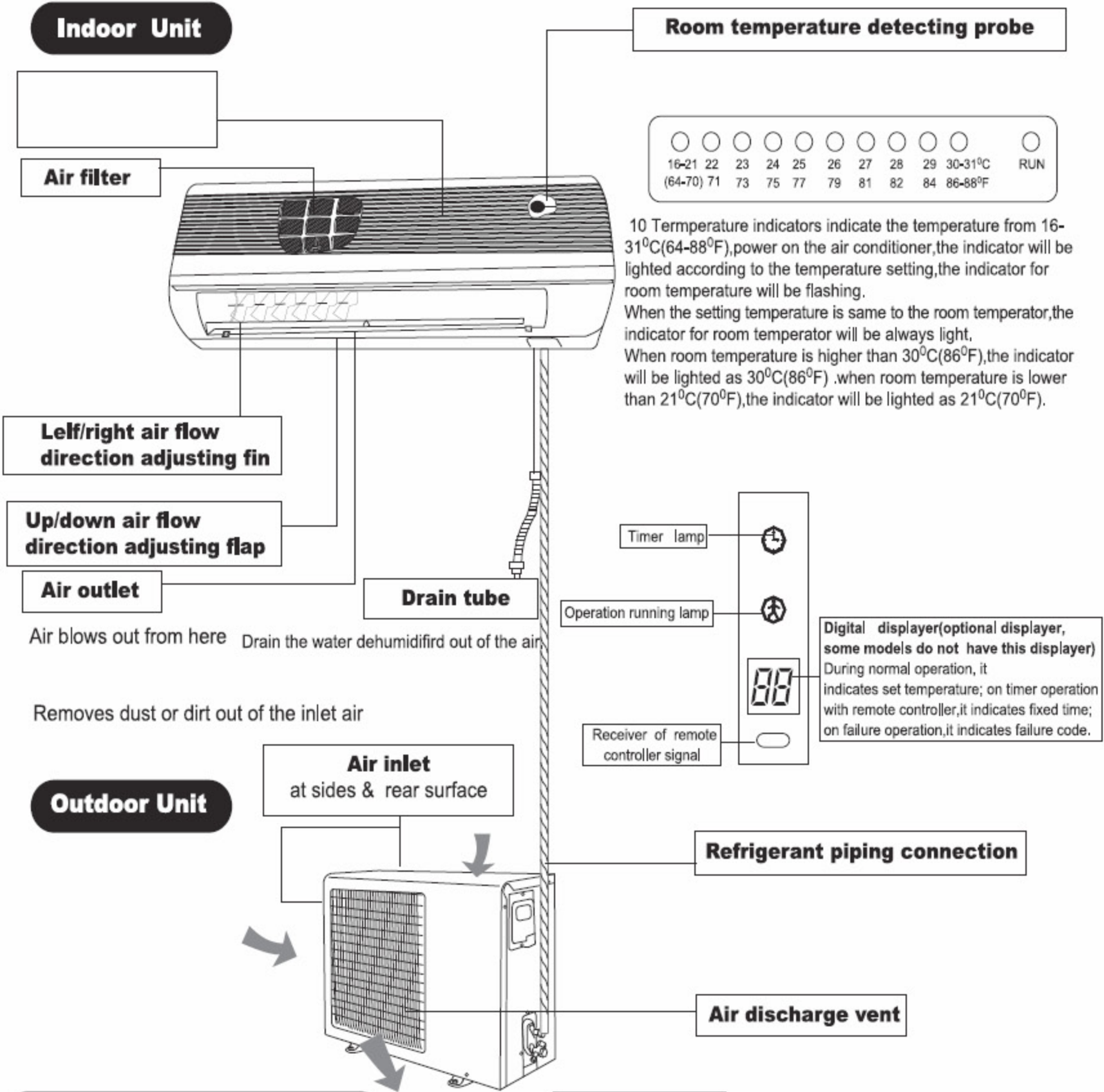


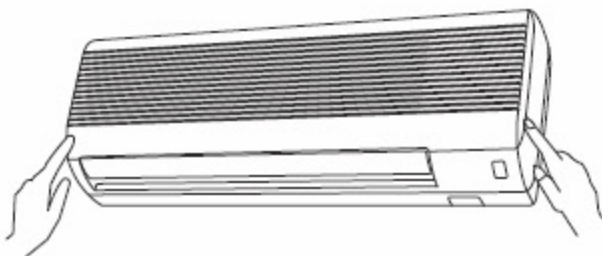
【The name of each part and its function】

There are many models, features and appearance will vary, all the figures provide a demonstration to introduce the function.



Unit operation section

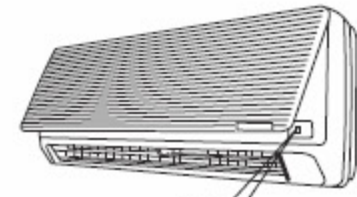
How to open



Lightly push both sides of the air inlet grid at the bottom and pull it to this side till a resistance is felt.

How to close

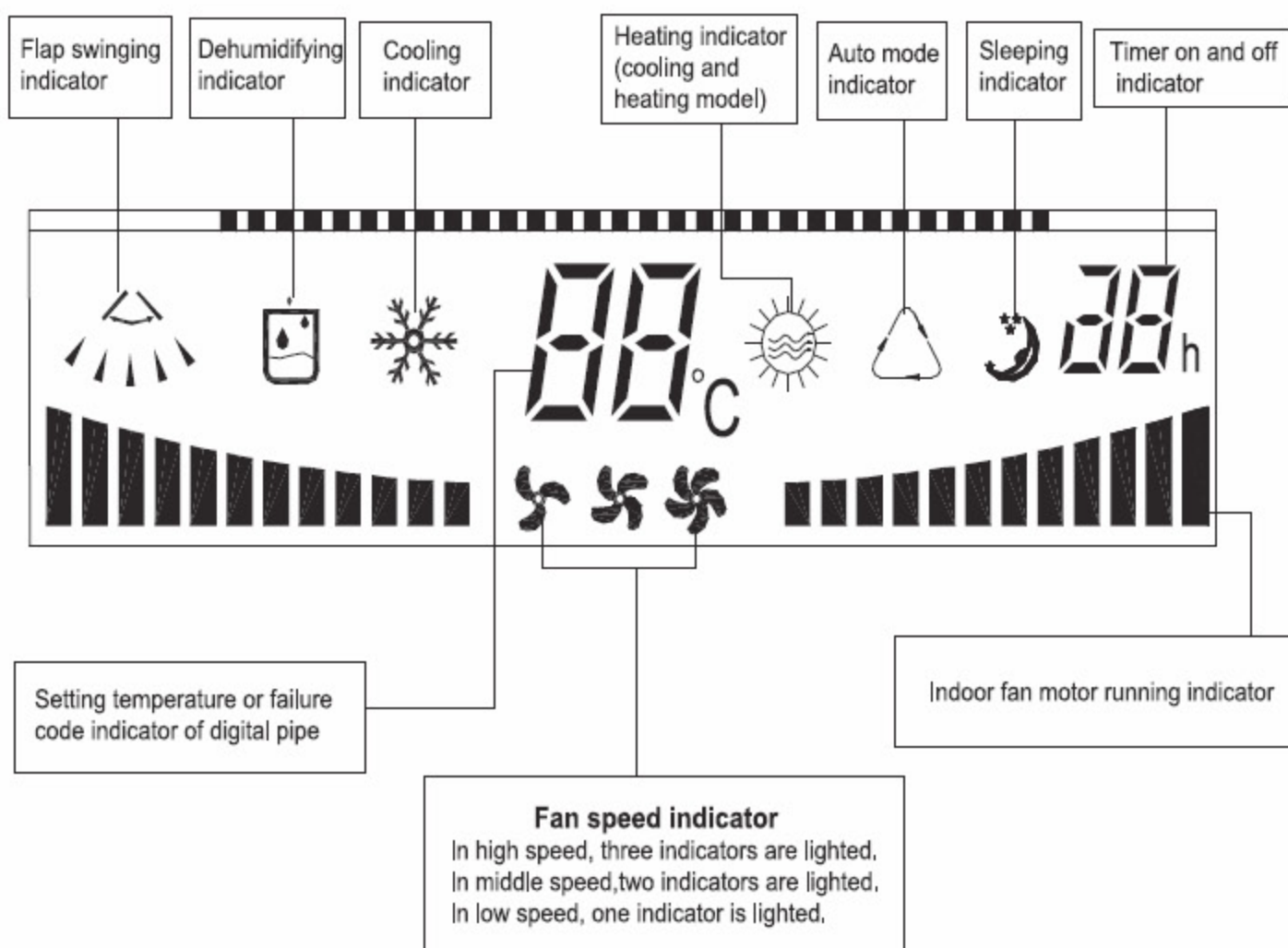
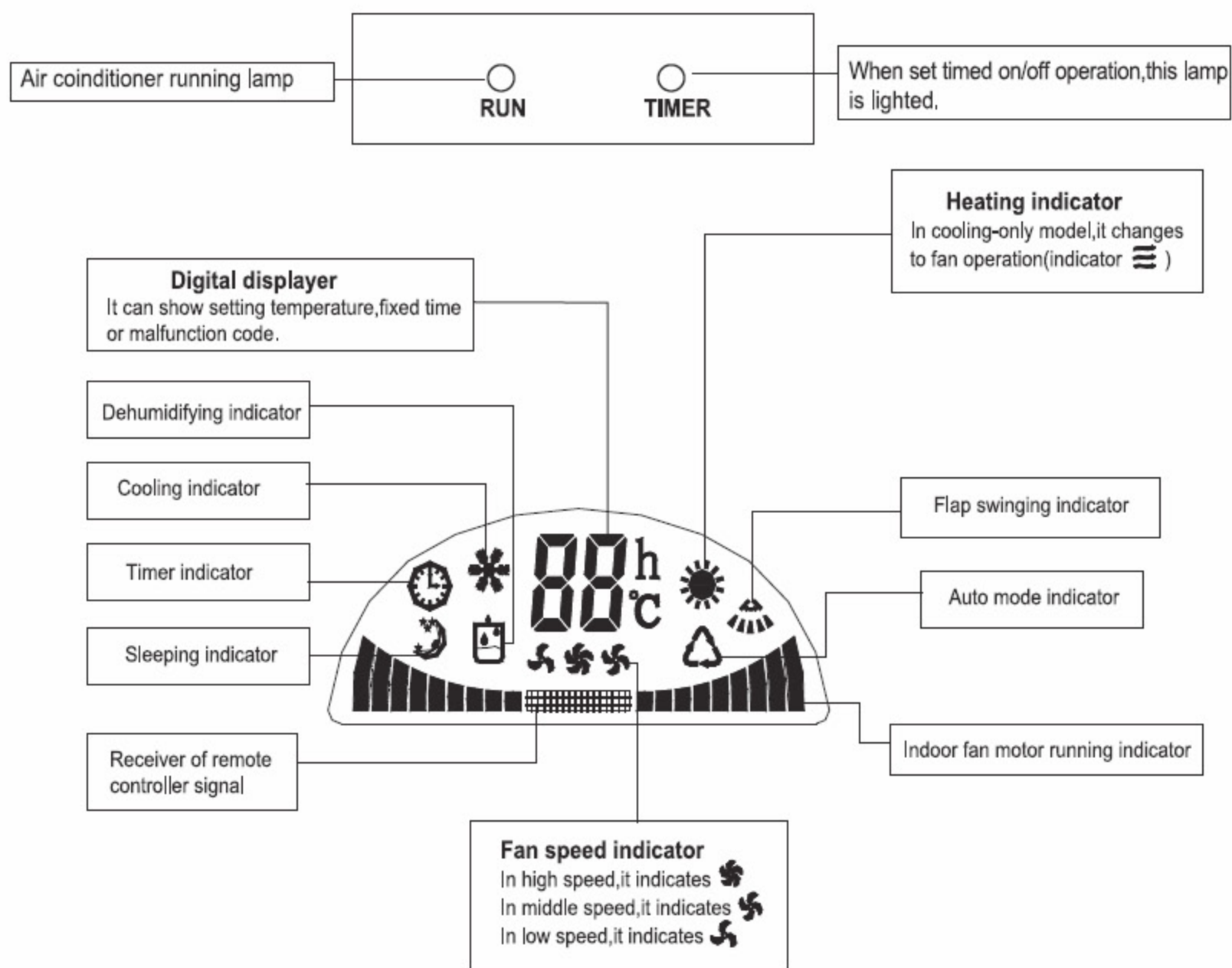
Push down the air inlet grid and the push both sides of air inlet grid at the bottom.



Emergency operation key

This button can be used as an emergency measure to turn on/off unit when remote controller is not available.

Note: Do not open the grid at an angle over 60 degrees. Do not operate the units with too much force.



Note: The indicator may be changed, but it does not affect your operation, please subject to what you purchase.